

---

# WSM SERIES

## Rugged Shockmount Cabinet

---

**High Quality Rugged Structure  
and Anti-Vibration Design**

Optional Front/ Rear Lockable Covers

Universal Fit Most of Rackmount Chassis

Rugged Shockmount Style

Portable Handle

Patent Design on Industrial

Anti-Vibration Design

Spring Under Cabinet Post Cage

---



Anti-Vibration  
Design



Removable  
Side Panel



TAA  
Compliant



Handle  
Design



Rugged  
Material

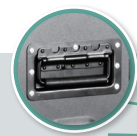


MIL-STD-810GF

# WSM SERIES

## Rugged Shockmount Cabinet

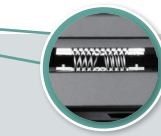
Description	Material	Chassis Depth	Dimensions (W x H x D)	Description	Material	Dimensions (W x H x D)
 <p><b>WSM - 660</b> 6U 600mm Depth Rackmount Server Cabinet</p>	SPCC T:1.6mm	23" and under	27.56" x 19.69" x 23.62" 700.0 x 500.1 x 599.9 (mm)	 <p><b>WSM-DOOR-6U</b> 6U DOOR KIT FOR WSM-660</p>	Steel	27.60" x 19.70" x 3.50" 701.0 x 500.4 x 88.9 (mm)
 <p><b>WSM - 960</b> 9U 600mm Depth Rackmount Server Cabinet</p>	SPCC T:1.6mm	23" and under	27.56" x 19.69" x 23.62" 700.0 x 653.0 x 599.9 (mm)	 <p><b>WSM - DOOR-9U</b> 9U DOOR KIT FOR WSM-960</p>	Steel	27.60" x 25.70" x 3.50" 701.0 x 652.8 x 88.9 (mm)
 <p><b>WSM - 1560</b> 15U 600mm Depth Rackmount Server Cabinet</p>	SPCC T:1.6mm	23" and under	27.56" x 36.22" x 23.62" 700.0 x 920.0 x 599.9 (mm)	 <p><b>WSM - DOOR-15U</b> 15U DOOR KIT FOR WSM-1560</p>	Steel	27.60" x 36.20" x 3.50" 701.0 x 919.5 x 88.9 (mm)



Portable Handle



Air Ventilation



Anti-Vibration Design

Rugged Material



Removable Side Panel

# WSM SERIES

## Rugged Shockmount Cabinet

High Quality Rugged Structure and Anti-Vibration Design

Optional Front/  
Rear Lockable Covers

Patent Design on Industrial

Anti-Vibration Design

Rugged Shockmount Style

Portable Handle

Spring Under Cabinet  
Post Cage

Universal Fit Most  
of Rackmount Chassis



Anti-Vibration  
Design



Removable  
Side Panel



Handle  
Design



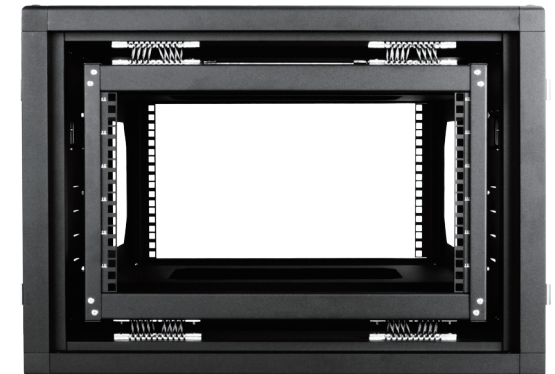
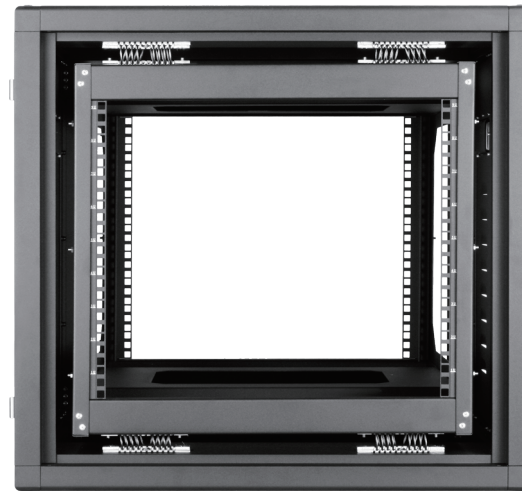
Rugged  
Material



TAA  
Compliant



MIL-STD-810GF



WSM series shockmount cabinet is built with high-quality aluminum/steel structures and anti-vibration patent design. With handle design, WSM series provides your critical rackmount equipment the ultimate mobility. Optional front and rear covers are able to prevent your critical systems from collision damage.